



# ALLISON PARK CHURCH

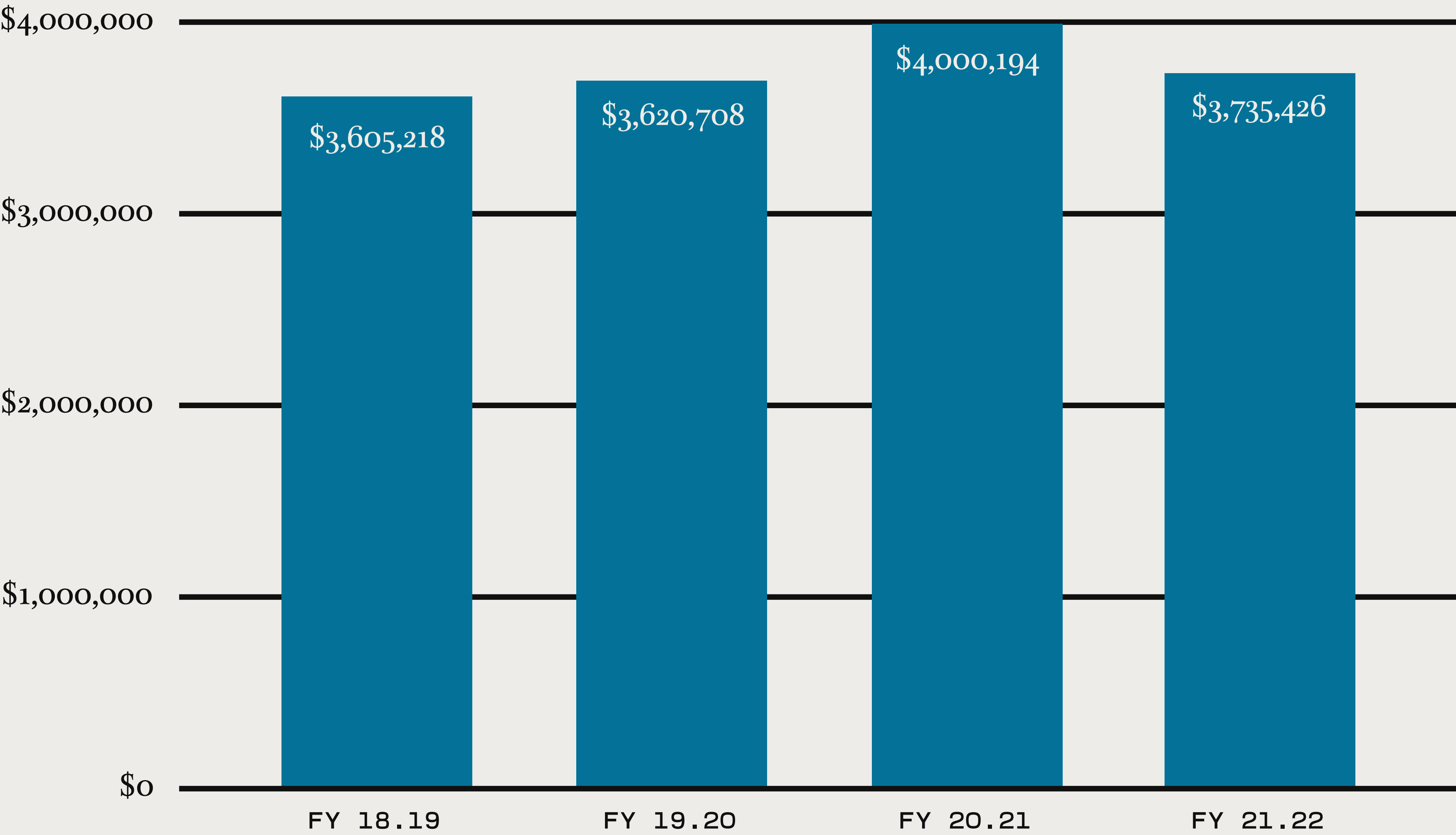
## FINANCIAL PRESENTATION

FISCAL YEAR – OCT 1, 2021 TO SEPT 30, 2022

# ALLISON PARK CHURCH TITHES

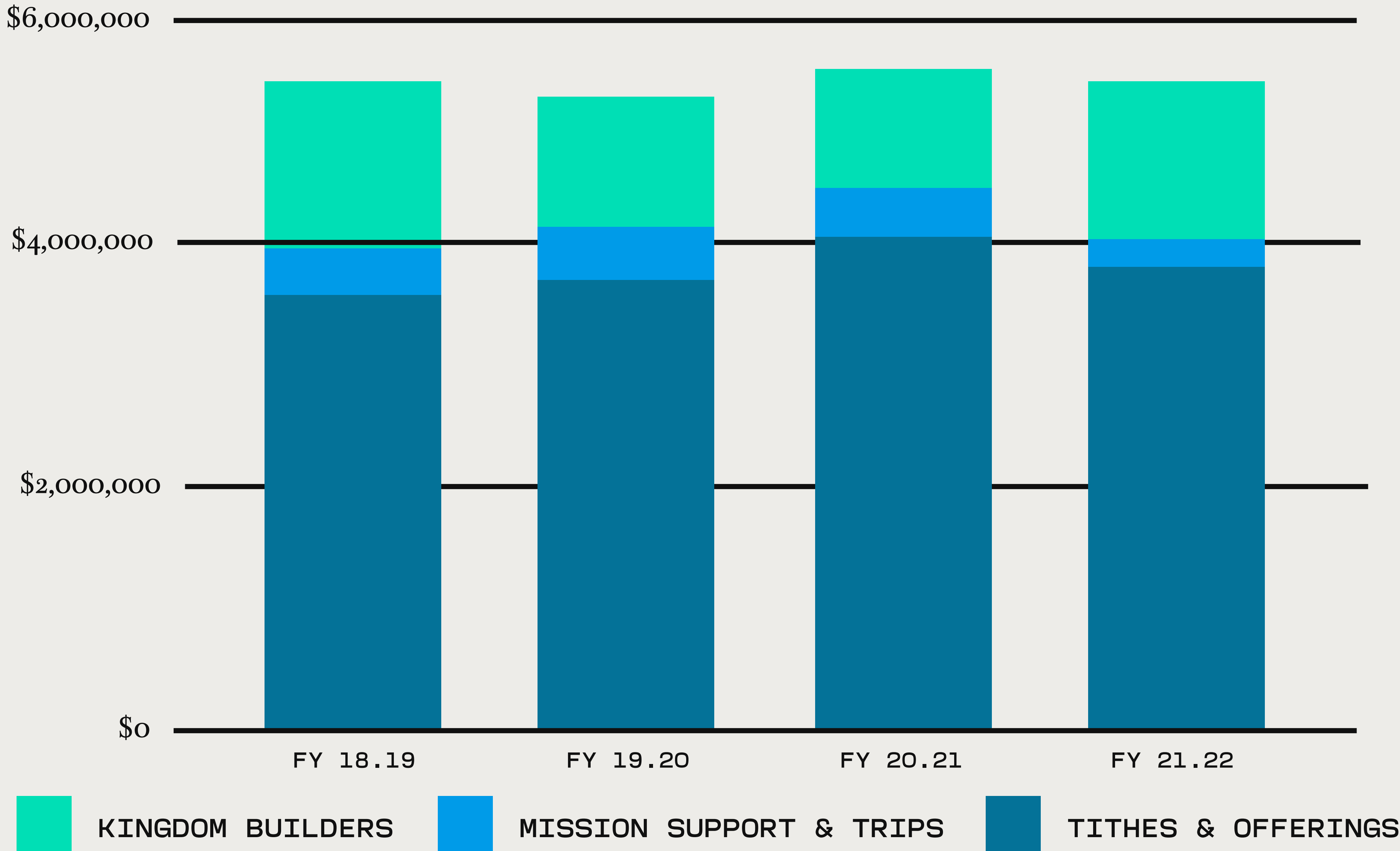


INCLUDES GIVING FROM ALL APC CAMPUSES



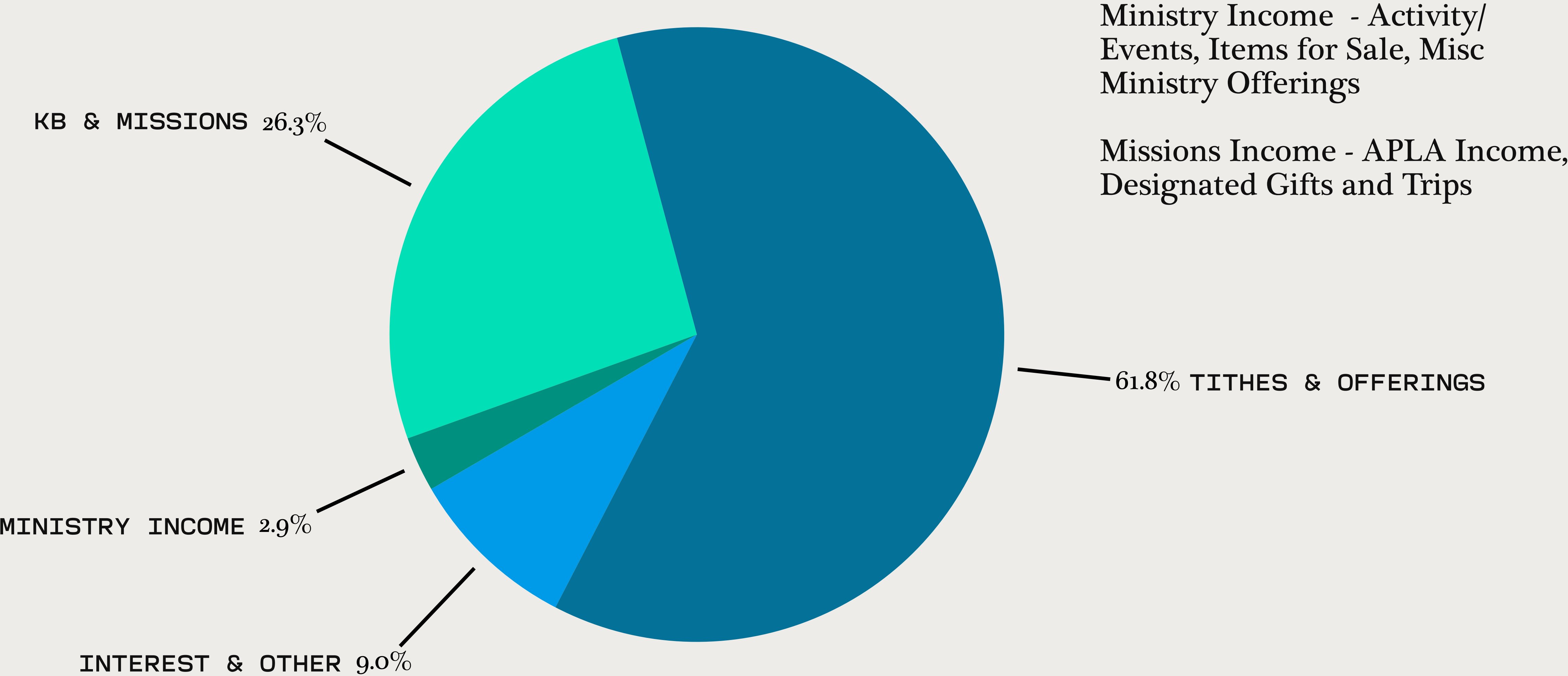
# ALLISON PARK CHURCH

INCLUDES GIVING FROM ALL APC CAMPUSES



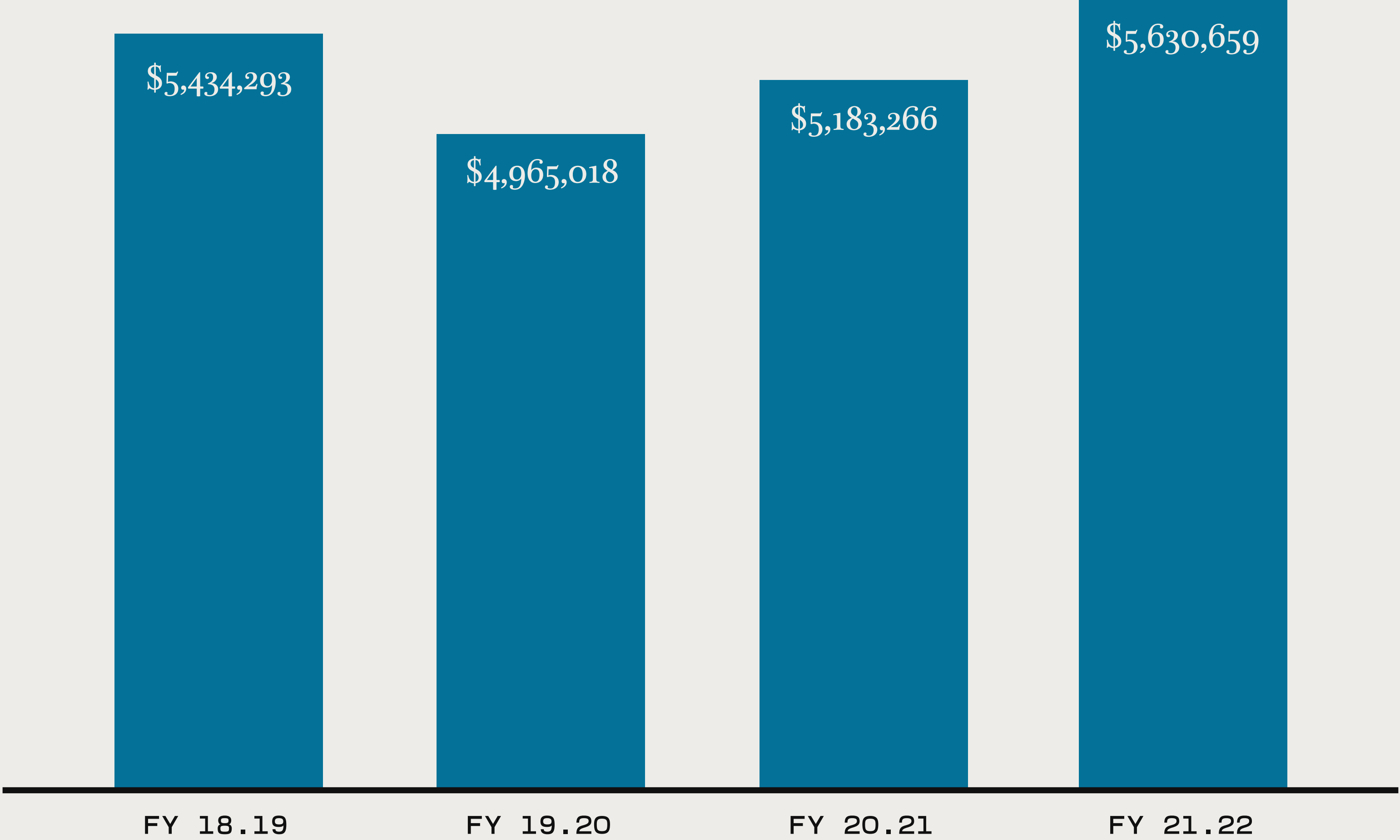
# ALLISON PARK CHURCH

INCLUDES REVENUE FROM ALL APC CAMPUSES



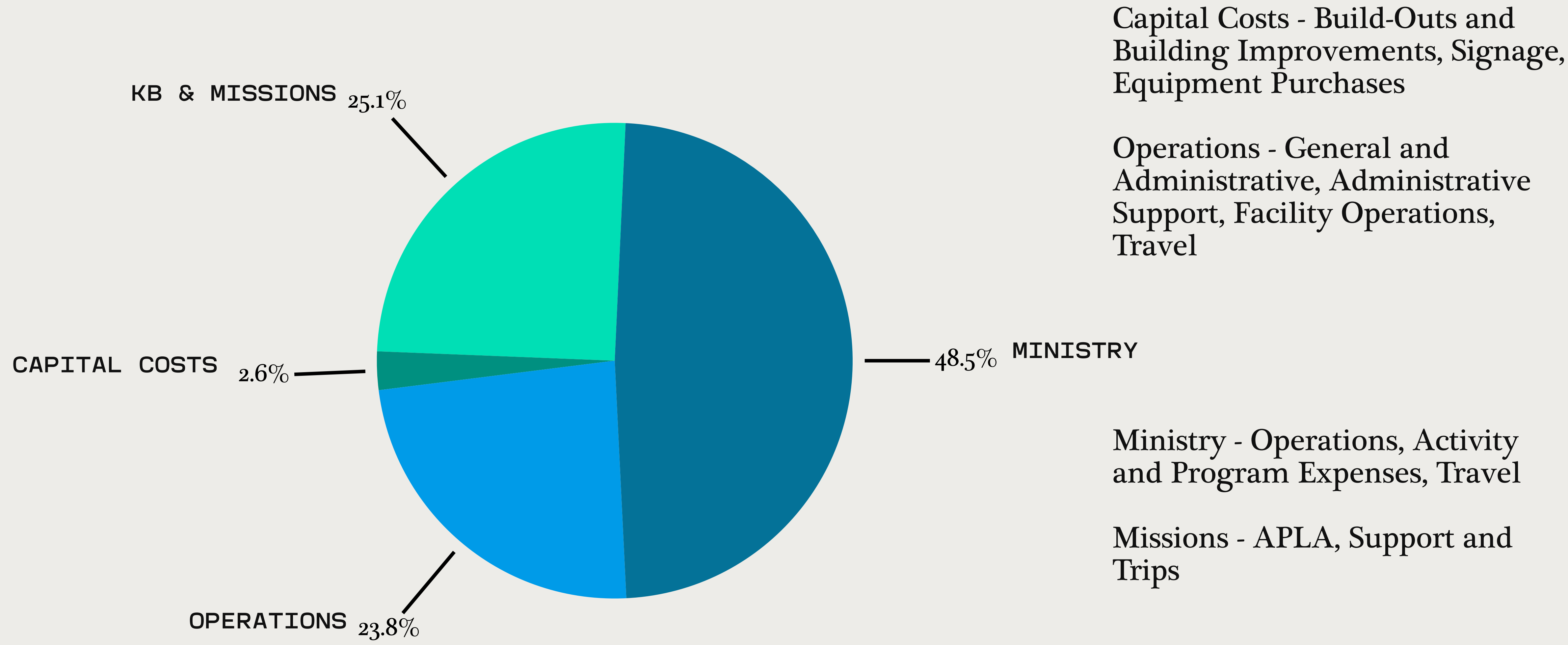
**TOTAL CONTRIBUTIONS: \$6,040,451**

# ALLISON PARK CHURCH OUTFLOWS



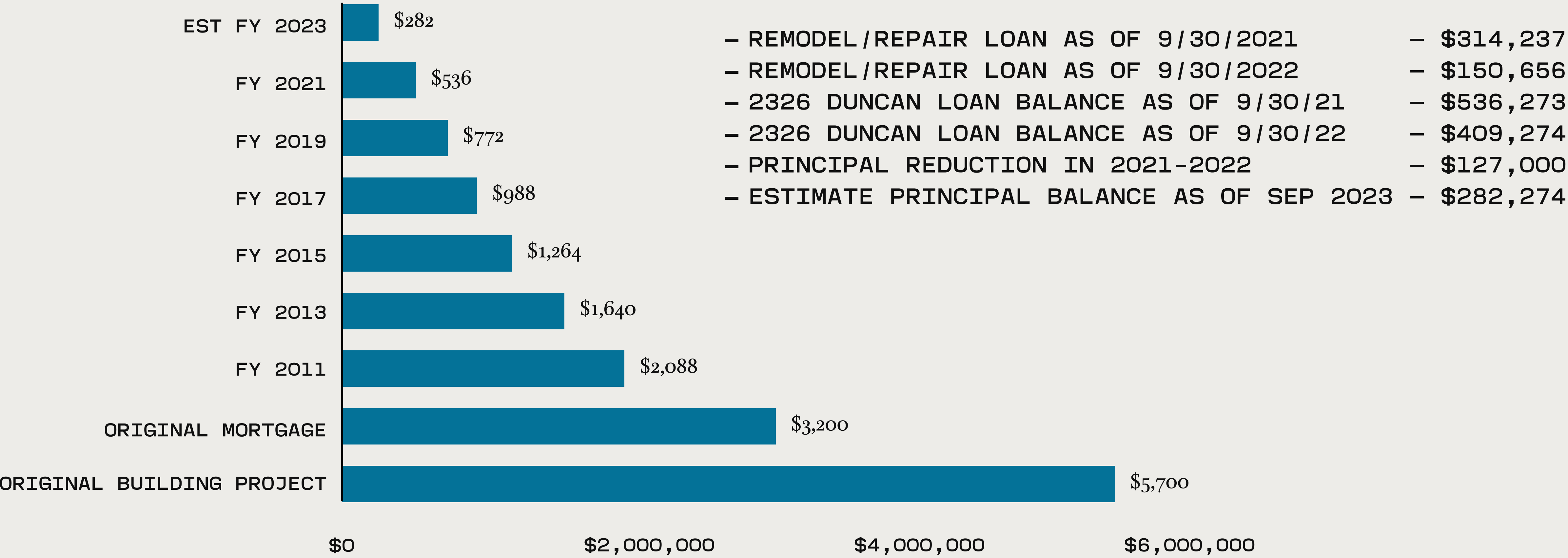
# ALLISON PARK CHURCH FY 21.22

INCLUDES OPERATING COSTS AND CAPITAL COSTS



**\$5,630,659**

# LOAN UPDATES



# ATTENDANCE | WEEKLY AVERAGES

